

# 12 mil. Vapor Barrier Comparison

Comparison of the quality and thickness of products that are sold as 12 mil. reinforced poly vapor barriers.

Competitor

vs.

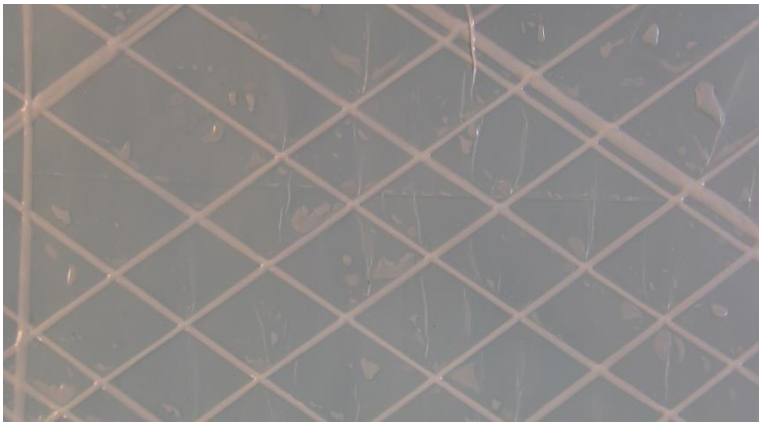
Crawlspace Depot



Inconsistency in the competitor reinforcing threads



Consistent symmetry in CSD threads



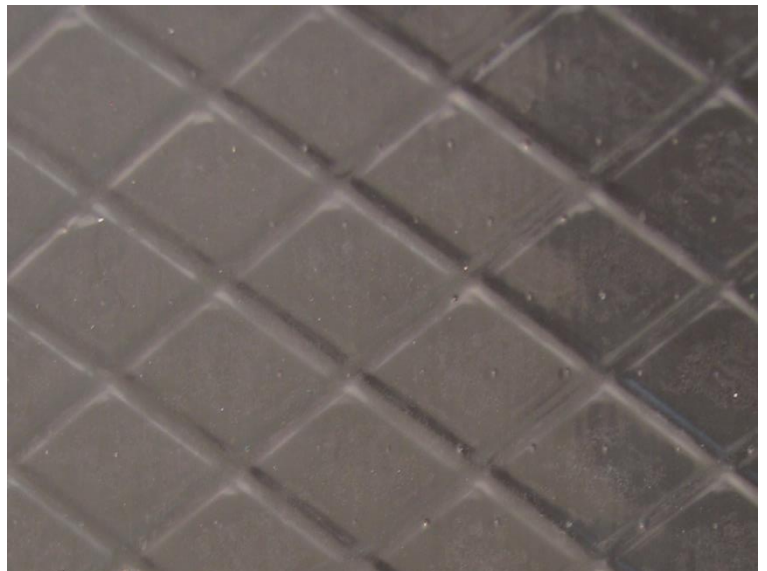
Competitor poly is opaque creating a dull white/green color



Our poly is solid white and backing doesn't bleed through



The competitor poly has delamination issues



CSD poly has no lamination issues

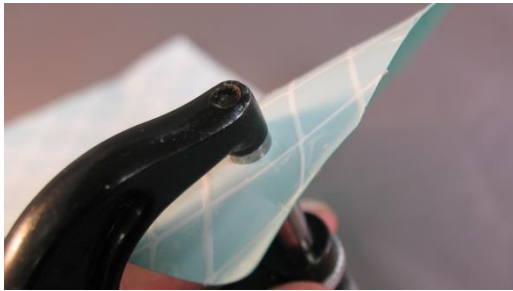
# 12 mil. Vapor Barrier Comparison

Comparison of the quality and thickness of products that are sold as 12 mil. reinforced poly vapor barriers.

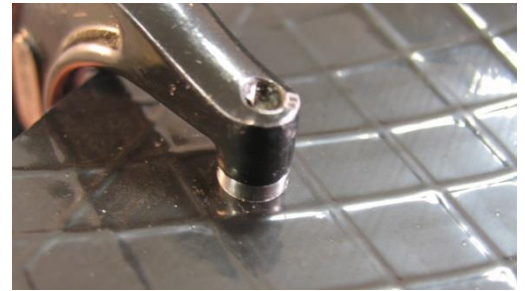
Competitor

vs.

Crawlspace Depot



Measurement of the actual thickness of the poly between the reinforcing threads.



The competitor poly measure 8 mil.



Our poly measures 12 mil.



Measurement of the thickest part of the poly, the area where the reinforcing threads cross.



The competitor poly measure 10 mil.



The CSD poly measures 15 mil.